
TECHNICAL SPECIFICATIONS

B3BM/B3BV Series

Air Handler

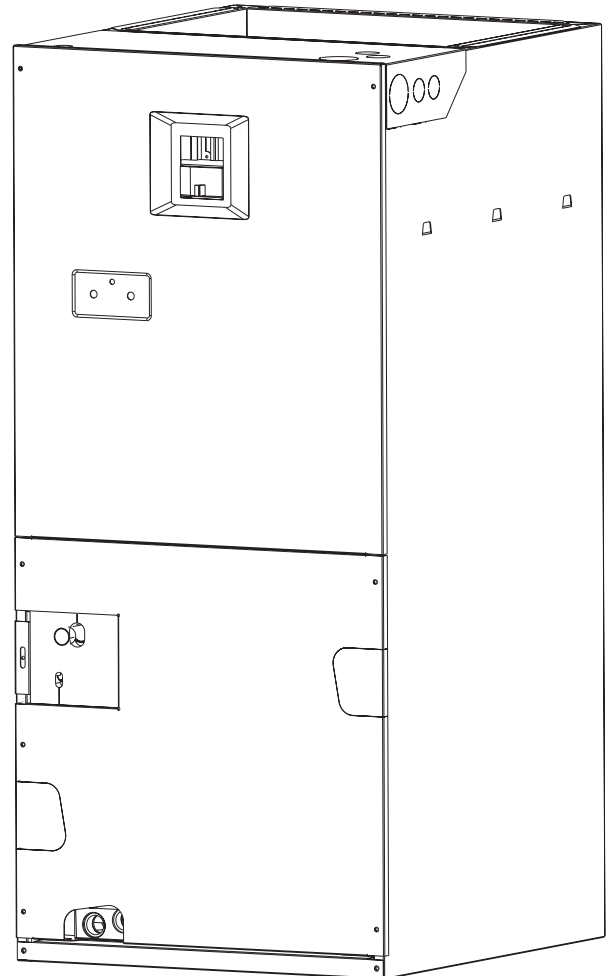
10 and 12 SEER Residential System

18,000 - 60,000 Btuh (Heat Pump & Air Conditioner)

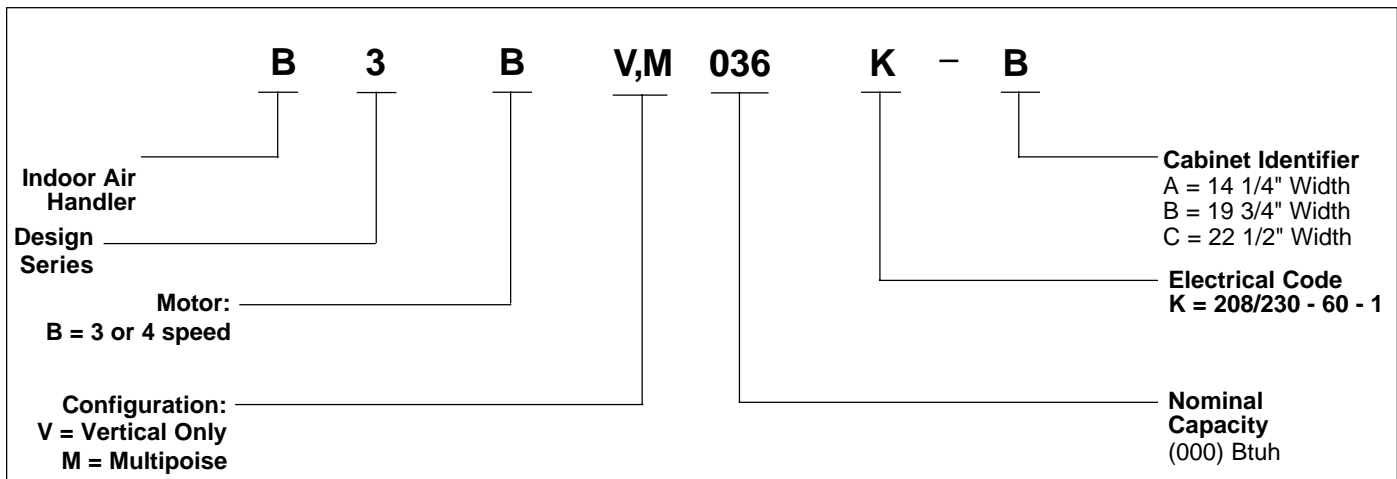
The B3B(M,V) Series of air handlers, when combined with our heat pump or air conditioner, offers a full line of quality, split system heating and cooling equipment.

FEATURES and BENEFITS

- **Durable, Attractive Cabinet** – Designed using galvanized steel with a polyurethane finish. The 950 hour salt spray finish is 1.5 mil thick and resists corrosion 50% better than comparable units. The plastic drain pan is corrosion resistant.
- **Multi-poised** – Can be used in horizontal, upflow, downflow and vertical applications. (B3BM Only)
- **Multi-speed** – Gives flexibility of installation.
- **Ease-of-Service** – Plug-in wire connections and built-in filter rack makes the air handler easy to service.
- **Plug-in Heater Kits** – Available in 5kw - 20 kw with or without circuit breakers; staged in 5kw or 10kw increments.
- **6 Year Limited All Parts Warranty** – The best in the industry and has proven to be a major benefit to the consumer.
- **Breaker Accessibility** – Breaker accessible from front of unit when heater is applied.
- **No Fasteners on sides or back** – Smooth surfaces for installations.



MODEL IDENTIFICATION CODE



SPECIFICATIONS

Model B3BM/B3BV	024K-A	030K-A	036K-B	042K-B	048K-B	060K-C
Nominal Cooling Capacity - Btuh (1)	22,800	30,000	34,600	40,000	45,500	56,500
Refrigerant Flow Control (2)	.060 (.051)*	.063 (.067)*	0.067	0.075	.080	0.093
Maximum Available Auxiliary Heat (kw)	10	10	20	20	20	20
Nominal Blower Size (D x W)	10 x 6	10 x 6	10 x 8	10 x 8	10 x 8	10 x 10
(H.P. - Speed - Type)	1/5-3-PSC	1/3-3-PSC	1/3-3-PSC	1/3-3-PSC	1/2-3-PSC	3/4-4-PSC
Rated External Static Pressure (in. W.C.)	.30	.35	.35	.35	.40	.40
CFM @ Rated ESP	900	1150	1350	1400	1600	1800
Filter Size (see note below)	12 x 20 x 1	12 x 20 x 1	18 x 20 x 1	18 x 20 x 1	18 x 20 x 1	20 x 20 x 1
Approximate Shipping Weight (lbs.)	75	85	105	110	140	145

(1) See current ARI Directory for certified combinations and ratings.

(2) Units are 10 SEER air conditioner ready as shipped.

* Additional orifice shipped with unit

ACCESSORIES

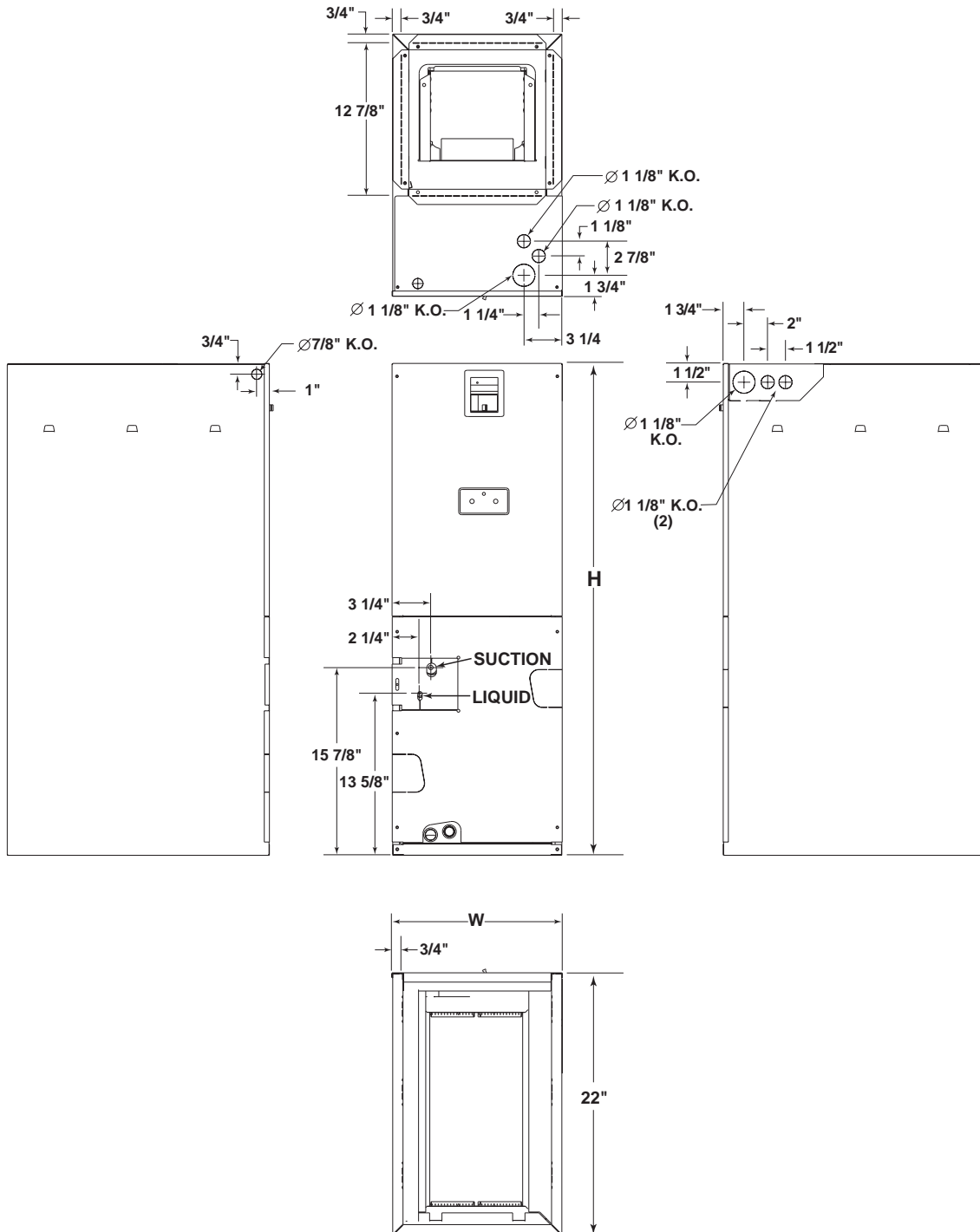
Accessory Kit Description	Cabinet Size			Order Number
	A	B	C	
Downflow Adaptor Kit	X			917342
		X		917343
			X	917344
Single Circuit Adaptor Kit		X	X	913874
B3BV Horizontal Drain Pan Conversion Kit	X	X	X	903749
Variable Speed Kit		X		903764
			X	903765

240V Single Phase Electric Heat Kits

KW	No. of Stages	Approved for Cabinet	Order Number	
			with Circuit Breaker(s)	w/o Circuit Breaker(s)
5	1	A, B, C	917367	917366
8	1	A, B, C	917370	917368
	2	A, B, C	917371	917369
10	1	A, B, C	917374	917372
	2	A, B, C	917375	917373
15	2	B, C	917376	N/A
	3	B, C	917377	N/A
20	2	B, C	917378	N/A
	4	B, C	917379	N/A

DIMENSIONS

Models B3BM/B3BV	H	W	Refrigerant Connections		Filter Size
			Suction Dia.	Liquid Dia.	
024K-A	42	14 1/4	3/4	3/8	12 x 20 x 1
030K-A	42	14 1/4	3/4	3/8	12 x 20 x 1
036K-B	43 1/2	19 3/4	3/4	3/8	18 x 20 x 1
042K-B	43 1/2	19 3/4	3/4	3/8	18 x 20 x 1
048K-B	43 1/2	19 3/4	3/4	3/8	18 x 20 x 1
060K-C	43 1/2	22 1/2	7/8	3/8	20 x 20 x 1



SYSTEM AIR FLOW DATA

Unit	HP	Speed	ESP (" H ₂ O)	CFM	CFM Low	CFM Med	CFM High
024A	1/5 HP 10 X 6	3	0.1		620	750	950
			0.2		580	730	930
			0.3		520	680	880
			0.4		460	630	830
			0.5		400	580	770
030A	1/3 HP 10 X 6	3	0.1		860	1100	1250
			0.2		840	1090	1230
			0.3		800	1040	1170
			0.4		750	990	1120
			0.5		720	950	1070
036B	1/3 HP 10 x 8	3	0.1		1070	1400	1590
			0.2		1050	1390	1580
			0.3		1010	1340	1520
			0.4		960	1280	1450
			0.5		920	1240	1390
042B	1/3 HP 10 x 8	3	0.1		1060	1380	1560
			0.2		1050	1370	1550
			0.3		1000	1310	1480
			0.4		950	1250	1410
			0.5		910	1200	1360
048B	1/2 HP 10 X 8	3	0.1		1720	1890	2040
			0.2		1710	1880	2030
			0.3		1660	1810	1950
			0.4		1610	1740	1880
			0.5		1560	1680	1810
060C	3/4 HP 10 X 10	4		Low	Med-Low	Med-Hi	High
			0.1	1670	1850	2010	2110
			0.2	1660	1840	2000	2100
			0.3	1590	1750	1910	2000
			0.4	1530	1670	1850	1910
	0.5	1470	1610	1770	1820		

Notes:

- 1) Airflow is shown in cfm, +/- 5%.
- 2) External static pressure is shown in inches w.c.
- 3) All airflows are measured without filter and with dry coil. For filter velocity of 300 ft./min. subtract .08" external static pressure. For wet coil, subtract .1" external static pressure.
- 4) See unit nameplate or installation instructions for maximum recommended external static pressure.



CERTIFICATION APPLIES ONLY
WHEN THE COMPLETE
SYSTEM IS LISTED
WITH ARI

817A-0899 (Replaces 817A-0799)