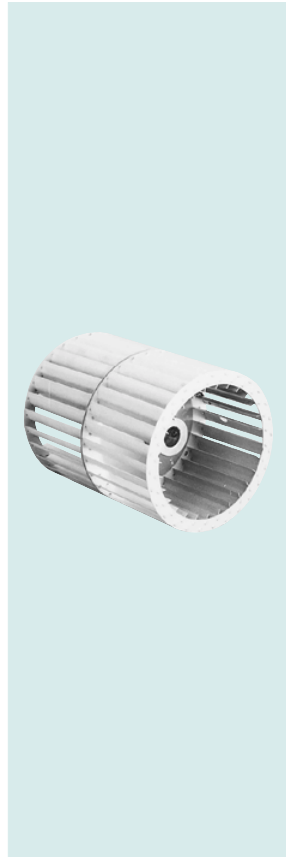


## DOUBLE INLET WHEELS - ALUMINUM WITH STEEL HUB

Maximum Operating Temperature 150°

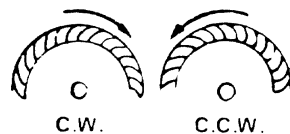


LAU Part #	Diameter	Width	Rotation	Bore	Max. RPM
028958-08	4 <sup>3</sup> / <sub>4</sub> -	5 <sup>1</sup> / <sub>8</sub> -	CW	<sup>1</sup> / <sub>2</sub> -	3450
028958-14	4 <sup>3</sup> / <sub>4</sub> -	5 <sup>1</sup> / <sub>8</sub> -	CCW	<sup>1</sup> / <sub>2</sub> -	3450
028958-01	4 <sup>3</sup> / <sub>4</sub> -	6 <sup>7</sup> / <sub>8</sub> -	CW	<sup>1</sup> / <sub>2</sub> -	3450
028958-15	4 <sup>3</sup> / <sub>4</sub> -	6 <sup>7</sup> / <sub>8</sub> -	CCW	<sup>1</sup> / <sub>2</sub> -	3450
028958-02	5 <sup>1</sup> / <sub>4</sub> -	5 <sup>7</sup> / <sub>8</sub> -	CW	<sup>1</sup> / <sub>2</sub> -	3450
028958-16	5 <sup>1</sup> / <sub>4</sub> -	5 <sup>7</sup> / <sub>8</sub> -	CCW	<sup>1</sup> / <sub>2</sub> -	3450
028958-17	5 <sup>1</sup> / <sub>4</sub> -	6 <sup>3</sup> / <sub>4</sub> -	CCW	<sup>1</sup> / <sub>2</sub> -	3450
028958-18	5 <sup>1</sup> / <sub>4</sub> -	6 <sup>3</sup> / <sub>4</sub> -	CW	<sup>1</sup> / <sub>2</sub> -	3450
028958-03	5 <sup>1</sup> / <sub>4</sub> -	6 <sup>7</sup> / <sub>8</sub> -	CW	<sup>1</sup> / <sub>2</sub> -	3450
028958-19	5 <sup>1</sup> / <sub>4</sub> -	6 <sup>7</sup> / <sub>8</sub> -	CCW	<sup>1</sup> / <sub>2</sub> -	3450
028958-04	5 <sup>3</sup> / <sub>4</sub> -	5 <sup>7</sup> / <sub>8</sub> -	CW	<sup>1</sup> / <sub>2</sub> -	3450
028958-20	5 <sup>3</sup> / <sub>4</sub> -	5 <sup>7</sup> / <sub>8</sub> -	CCW	<sup>1</sup> / <sub>2</sub> -	3450
028958-05	5 <sup>3</sup> / <sub>4</sub> -	6 <sup>7</sup> / <sub>8</sub> -	CW	<sup>1</sup> / <sub>2</sub> -	3450
028958-21	5 <sup>3</sup> / <sub>4</sub> -	6 <sup>7</sup> / <sub>8</sub> -	CCW	<sup>1</sup> / <sub>2</sub> -	3450
028958-22	5 <sup>3</sup> / <sub>4</sub> -	7 <sup>5</sup> / <sub>8</sub> -	CW	<sup>1</sup> / <sub>2</sub> -	3450
028958-23	5 <sup>3</sup> / <sub>4</sub> -	7 <sup>5</sup> / <sub>8</sub> -	CCW	<sup>1</sup> / <sub>2</sub> -	3450
028958-24	5 <sup>3</sup> / <sub>4</sub> -	8-	CW	<sup>1</sup> / <sub>2</sub> -	3450
028958-25	5 <sup>3</sup> / <sub>4</sub> -	8-	CCW	<sup>1</sup> / <sub>2</sub> -	3450
028958-06	5 <sup>3</sup> / <sub>4</sub> -	8 <sup>1</sup> / <sub>2</sub> -	CW	<sup>1</sup> / <sub>2</sub> -	3450
028958-26	5 <sup>3</sup> / <sub>4</sub> -	8 <sup>1</sup> / <sub>2</sub> -	CCW	<sup>1</sup> / <sub>2</sub> -	3450
028958-27	6 <sup>5</sup> / <sub>16</sub> -	6 <sup>3</sup> / <sub>8</sub> -	CW	<sup>3</sup> / <sub>4</sub> -	3450
028958-28	6 <sup>5</sup> / <sub>16</sub> -	6 <sup>3</sup> / <sub>8</sub> -	CCW	<sup>3</sup> / <sub>4</sub> -	3450
028958-07	6 <sup>5</sup> / <sub>16</sub> -	7 <sup>5</sup> / <sub>8</sub> -	CW	<sup>1</sup> / <sub>2</sub> -	3450
028958-29	6 <sup>5</sup> / <sub>16</sub> -	7 <sup>5</sup> / <sub>8</sub> -	CCW	<sup>1</sup> / <sub>2</sub> -	3450
028958-32	7 <sup>1</sup> / <sub>2</sub> -	4-	CW	<sup>3</sup> / <sub>4</sub> -	2500
028958-33	7 <sup>1</sup> / <sub>2</sub> -	4-	CCW	<sup>3</sup> / <sub>4</sub> -	2500
028958-34	7 <sup>1</sup> / <sub>2</sub> -	5-	CW	<sup>3</sup> / <sub>4</sub> -	2500
028958-35	7 <sup>1</sup> / <sub>2</sub> -	5-	CCW	<sup>3</sup> / <sub>4</sub> -	2500
028958-36	7 <sup>1</sup> / <sub>2</sub> -	6 <sup>1</sup> / <sub>32</sub> -	CW	<sup>3</sup> / <sub>4</sub> -	1800
028958-37	7 <sup>1</sup> / <sub>2</sub> -	6 <sup>1</sup> / <sub>32</sub> -	CCW	<sup>3</sup> / <sub>4</sub> -	1800

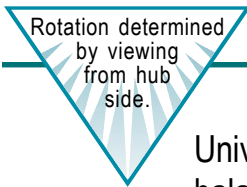


### TECHNICAL TIPS: For other sizes:

- Double inlet wheels may be duplicated in the field by:
  1. Using one CW and one CCW single wheel (may be different widths to make up space required, but diameters must be the same). (See pages 23-24.)
  2. For wheels too close to apparatus to reach with driver, tighten wheels to shaft by using extended "T" Allen wrench inserted through a notch in one of the blades in each wheel.
  3. CAUTION: To avoid potential vibration, allow slight air gap (min. <sup>1</sup>/<sub>32</sub>-) between wheels.
- To determine rotation for Double Wheels – View from hub:



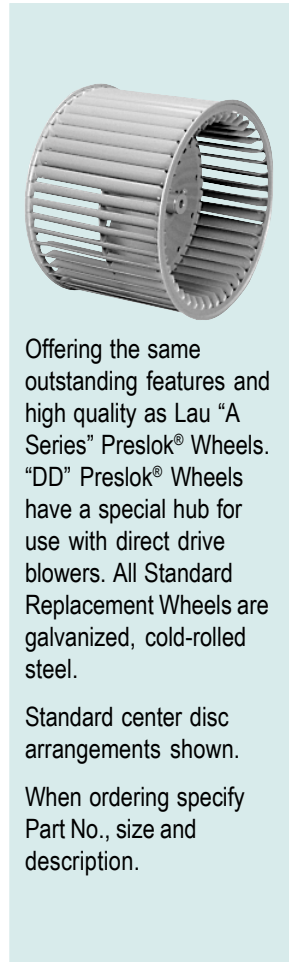
DOUBLE INLET – DIRECT DRIVE



Universal replacement “DD” Preslok® Wheels for direct drive blowers are dynamically balanced and forward curved, incorporating the Preslok® center disc construction for positive blade retention, providing higher RPM capability and industry proven reliability. See “Torque-A-Guide,” page 37, for maximum available starting torques.

**GALVANIZED – Maximum RPM 1750**

Part No.	LAU Model	Bore Size	Rot.	Center Disc.	Y	W	D	X	U	Z	H	J
013334-01	DD 9- 4A	1/2	OW	Convex	9 <sup>15</sup> / <sub>16</sub>	4 1/2	9 1/2	7 <sup>1</sup> / <sub>16</sub>	1 1/4	1 <sup>25</sup> / <sub>32</sub>	43	1
013335-01	DD 9- 6A	1/2	OW	Convex	9 <sup>15</sup> / <sub>16</sub>	6	9 1/2	7 <sup>1</sup> / <sub>16</sub>	1 1/4	1 <sup>25</sup> / <sub>32</sub>	43	1
013336-02	DD 9- 7A	1/2	OW	Convex	9 <sup>15</sup> / <sub>16</sub>	7 1/8	9 1/2	7 <sup>1</sup> / <sub>16</sub>	1 1/4	1 <sup>25</sup> / <sub>32</sub>	43	1
013336-03	DD 9- 7A	1/2	CCW	Convex	9 <sup>15</sup> / <sub>16</sub>	7 1/8	9 1/2	7 <sup>1</sup> / <sub>16</sub>	1 1/4	1 <sup>25</sup> / <sub>32</sub>	43	1
013337-01	DD 9- 8A	1/2	OW	Convex	9 <sup>15</sup> / <sub>16</sub>	8	9 1/2	7 <sup>1</sup> / <sub>16</sub>	1 1/4	1 <sup>25</sup> / <sub>32</sub>	43	1
013337-03	DD 9- 8A	1/2	CCW	Convex	9 <sup>15</sup> / <sub>16</sub>	8	9 1/2	7 <sup>1</sup> / <sub>16</sub>	1 1/4	1 <sup>25</sup> / <sub>32</sub>	43	1
013332-01	DD 9- 9A	1/2	OW	Concave	9 <sup>15</sup> / <sub>16</sub>	9 1/2	9 1/2	7 <sup>1</sup> / <sub>16</sub>	1 1/4	7/32	43	1
013332-03	DD 9- 9A	1/2	CCW	Concave	9 <sup>15</sup> / <sub>16</sub>	9 1/2	9 1/2	7 <sup>1</sup> / <sub>16</sub>	1 1/4	7/32	43	1
013327-01	DD10- 4A	1/2	OW	Convex	11 1/8	4 1/2	10 5/8	8 7/8	1 1/4	1 <sup>15</sup> / <sub>16</sub>	48	1
013326-01	DD10- 6A	1/2	OW	Convex	11 1/8	6	10 5/8	8 7/8	1 1/4	1 <sup>15</sup> / <sub>16</sub>	48	1
013326-02	DD10- 6A	1/2	CCW	Convex	11 1/8	6	10 5/8	8 7/8	1 1/4	1 <sup>15</sup> / <sub>16</sub>	48	1
013326-14	DD10- 6A	5/8	OW	Convex	11 1/8	6	10 5/8	8 7/8	1 1/4	1 <sup>15</sup> / <sub>16</sub>	48	1
013325-01	DD10- 7A	1/2	OW	Convex	11 1/8	7 1/8	10 5/8	8 7/8	1 1/4	1 <sup>15</sup> / <sub>16</sub>	48	1
027102-04	DD10- 7A	1/2	CCW	Convex	11 1/8	7 1/8	10 5/8	8 7/8	1 1/4	1 <sup>15</sup> / <sub>16</sub>	48	1
013324-01	DD10- 8A	1/2	OW	Convex	11 1/8	8	10 5/8	8 7/8	1 1/4	1 <sup>15</sup> / <sub>16</sub>	48	1
013324-02	DD10- 8A	1/2	CCW	Convex	11 1/8	8	10 5/8	8 7/8	1 1/4	1 <sup>15</sup> / <sub>16</sub>	48	1
013317-01	DD10- 9A	1/2	OW	Concave	11 1/8	9 1/2	10 5/8	8 7/8	1 1/4	1/16	48	1
013317-04	DD10- 9A	1/2	CCW	Concave	11 1/2	9 1/2	10 5/8	8 7/8	1 1/4	1/16	48	1
013323-01	DD10- 9A	1/2	OW	Convex	11 1/8	9 1/2	10 5/8	8 7/8	1 1/4	1/16	48	1
013316-02	DD10-10A	1/2	OW	Concave	11 1/8	10 5/8	10 5/8	8 7/8	1 1/4	1/16	48	1
013322-03	DD10-10A	1/2	OW	Convex	11 1/8	10 5/8	10 5/8	8 7/8	1 1/4	1/16	48	1
013316-06	DD10-10A	1/2	CCW	Concave	11 1/8	10 5/8	10 5/8	8 7/8	1 1/4	1/16	48	1
026940-03	DD11- 6A	1/2	OW	Convex	12 1/4	6	11 3/4	10	1 1/4		53	1
026940-05	DD11- 7A	1/2	OW	Convex	12 1/4	7 1/8	11 3/4	10	1 1/4		53	1
026940-07	DD11- 8A	1/2	OW	Convex	12 1/4	8	11 3/4	10	1 1/4		53	1
026941-07	DD11- 8A	1/2	OW	Concave	12 1/4	8	11 3/4	10	1 1/4		53	1
026940-08	DD11- 8A	1/2	CCW	Convex	12 1/4	8	11 3/4	10	1 1/4		53	1
026940-09	DD11- 9A	1/2	OW	Convex	12 1/4	9 1/2	11 3/4	10	1 1/4		53	1
026940-10	DD11- 9A	1/2	CCW	Convex	12 1/4	9 1/2	11 3/4	10	1 1/4		53	1
026941-11	DD11-10A	1/2	OW	Concave	12 1/4	10 5/8	11 3/4	10	1 1/4		53	1
026941-12	DD11-10A	1/2	CCW	Concave	12 1/4	10 5/8	11 3/4	10	1 1/4		53	1
013693-25	DD12- 9A	1/2	OW	Convex	13 3/16	9 1/2	12 5/8	10 5/16	1 1/4	2	43	1 5/16
013693-15	DD12- 9A	5/8	OW	Convex	13 3/16	9 1/2	12 5/8	10 5/16	1 1/4	2	43	1 5/16
015565-07	DD12-12A	1/2	OW	Concave	13 3/16	12 5/8	12 5/8	10 5/16	1 1/4	1/16	43	1 5/16
015565-04	DD12-12A	5/8	OW	Concave	13 3/16	12 5/8	12 5/8	10 5/16	1 1/4	1/16	43	1 5/16



Offering the same outstanding features and high quality as Lau “A Series” Preslok® Wheels. “DD” Preslok® Wheels have a special hub for use with direct drive blowers. All Standard Replacement Wheels are galvanized, cold-rolled steel.

Standard center disc arrangements shown.

When ordering specify Part No., size and description.

TEMPERATURE: Due to temperature limitations of most motors, these wheels are recommended for application temperatures not exceeding 135°F (60°C). Wheels are rated to 200°F.



**SERVICE TIP:** If opposite rotation is required, mount motor on hub side. Set screw must be converted to Allen head screw and then tightened through the blades, using “T” Allen wrench. (May have to notch blade above set screw to provide access for “T” Allen wrench.)

