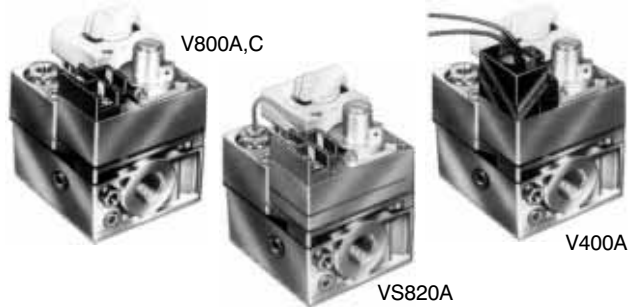


# Gas Burner Controls—Combination

## V400 Line Voltage; V800 Low Voltage; VS820 Millivoltage Combination Gas Controls



Provide complete control of continuous pilot gas-fired central furnaces and boilers.

- Include pilot flow adjustment screw.
- Easy to install, adjust and service; all adjustments and connections are accessible from top of control.
- Add separate energy cutoff (ECO) where codes call for dual safety shutoff.

- Complete safety shutoff on pilot flame failure.
- LITE-RITE (OFF-PILOT-ON) lighting sequence.
- ECO connector for V800 models, Part No. 392451-1.

The V800 family of combination gas controls replaces many competitive and Honeywell controls. For a complete list, see cross-reference information on pages 53-59.

### APPROVALS:

American Gas Association Design Certified: File No. L2025003.  
Canadian Gas Association Design Certified: File No. L2025003.  
Underwriters Laboratories Inc. Component Recognized.

MOUNTING: 0 to 90 degrees in any direction from the upright position of the gas control knob.

BODY PATTERN: Straight-through. Multitapped with 1/2 in. right and left outlets plugged, except as noted.

PRESSURE TAPPING: 1/8 in. NPT with plug.

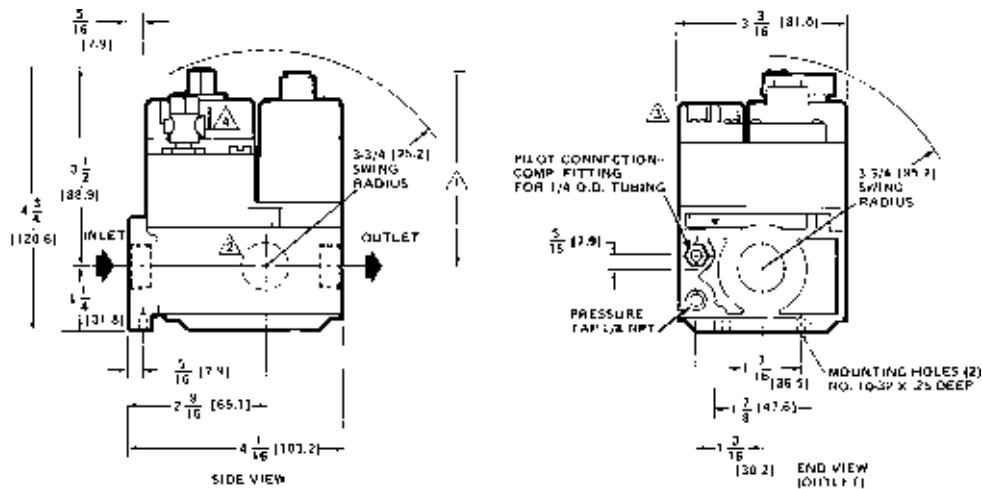
PRESSURE RATINGS: 1/2 psi (3.5 kPa) inlet pressure.

PILOT GAS OUTLET: Compression fitting for 1/4 in. OD tubing.

TEMPERATURE RATINGS:

Ambient: 32 F to 175 F (0 C to 79 C).

### Dimensions in in. [mm] of V800 family of combination gas controls.



- ▲ WITH V530G (ILLUSTRATED), V5307 OR 5309 PRESSURE REGULATOR: 24V MODELS—3-1/2 [88.9], 120V MODEL—3-5/8 [92.2] MANUAL MODELS 2-13/16 [71.4], FOR V5308 ADD 5/8 [15.9] TO DIMENSIONS GIVEN
- ▲ SIDE OUTLETS LEFT AND RIGHT HAND, STANDARD ONLY ON TRADELINE MODELS
- ▲ CONTROL WITH 24 V VALVE OPERATOR SHOWN. LINE VOLT MODEL HAS COVER FOR CONDUIT CONNECTION (TOP SURFACE).
- ▲ ECO CONNECTOR ON STANDARD CAPACITY V800 ONLY.

# Gas Burner Controls—Combination

V400; V800; VS820 continued

\*TRADELINE models. • SUPER TRADELINE model.

Order Number	Application	Description	Inlet-Outlet Size(in.)	Capacity, A.G.A Certified <sup>a,b</sup>		Pressure Regulator Setting <sup>a</sup>		Type of Gas	Includes
				cfh	m <sup>3</sup> /hr	in. wc	kPa		
*V400A1046	Automatic 120V control. Use with 30 mV thermocouple.	Color-coded black to identify 120V operation. 36 in. (914 mm) leadwires.	1/2 x 3/4	250	7.1	3.5	0.87	Nat.	One 3/4 x 1/2 in.; one 1/2 x 3/8 in. Reducer Bushings/Adapters <sup>D</sup>
*V400A1095			3/4 x 3/4	335	9.5				
*V400A1285			10.0	2.5	LP	—			
V400C1036 <sup>d</sup>							0.7 Step <sup>g</sup> ; 3.5 full rate	0.17 Step <sup>g</sup> ; 0.87 full rate	Nat.
*V800A1070 <sup>f</sup>	Automatic 24V control. Use with 30 mV thermocouple.	Color-coded blue to identify 24V operation. Terminal block has 3 combination screw and 1/4 in. (6 mm) quick-connect terminals. Current Draw: 0.2A.	1/2 x 3/4	250	7.1	3.5	0.87	Nat.	One 3/4 x 1/2 in.; one 1/2 x 3/8 in. Reducer Bushings/Adapters <sup>D</sup>
•V800A1088 <sup>f</sup>			3/4 x 3/4	335	9.5				
*V800A1476 <sup>C</sup>			1/2 x 3/4	250	7.1	0.9 Step <sup>g</sup> ; 3.5 full rate	0.22 Step <sup>g</sup> ; 0.87 full rate	LP	One 1/2 x 3/4 in. Reducer Bushings/Adapters <sup>D</sup>
*V800A1591			3/4 x 3/4	335	9.5				
*V800C1052			0.6 Step <sup>g</sup> ; 4.0 full rate	0.16 Step <sup>g</sup> ; 1.0 full rate	—				
V800C1359						0.9 Step <sup>g</sup> ; 3.5 full rate	0.22 Step <sup>g</sup> ; 0.87 full rate	Two 3/4 x 1/2 in.; one 1/2 x 3/8 in. Reducer Bushings/Adapters <sup>D</sup>	
V800C1466			0.6 Step <sup>g</sup> ; 4.0 full rate	0.16 Step <sup>g</sup> ; 1.0 full rate	—				
*V800C1540			1/2 x 1/2	225	5.1	2.2 Step <sup>g</sup> ; 11.0 full rate	0.5 Step <sup>g</sup> ; 2.7 full rate	LP	—
			3/4 x 3/4	335	9.5	4.0 Step <sup>g</sup> ; 10.0 full rate	1.0 Step <sup>g</sup> ; 2.5 full rate	Nat.	Two 3/4 x 1/2 in.; one 1/2 x 3/8 in. Reducer Bushings/Adapters <sup>D</sup>
*VS820A1047			Self-powered automatic control. Use with 750 mV pilot generator.	Color-coded red to identify Powerpile operation. Red pigtail power unit lead. Terminal block has 3 combination screw and 1/4 in. (6 mm) quick-connect terminals.	1/2 x 3/4	250	7.1	3.5	0.87
*VS820A1054	3/4 x 3/4	335			9.5				
*VS820A1336	11.0	2.7			LP	—			
*VS820C1100							0.9 Step <sup>g</sup> ; 3.5 full rate	0.22 Step <sup>g</sup> ; 0.87 full rate	Nat.

<sup>a</sup> 1000 Btu/ft<sup>3</sup>, 0.64 sp gr natural gas at 1 in. wc p.d. (37.3 MJ/m<sup>3</sup>, 0.64 sp gr natural gas at 0.25 kPa p.d.).

<sup>b</sup> Use of reducer bushings resulting in 3/4 x 1/2 in. inlet-outlet size reduces capacity to 250 cfh (7.1 m<sup>3</sup>/hr); use of reducer bushings resulting in 1/2 x 3/8 in. inlet-outlet size reduces capacity to 110 cfh (3.1 m<sup>3</sup>/hr).

<sup>c</sup> Straight through only. No side outlets.

<sup>d</sup> 30 in. (760 mm) leadwires.

<sup>e</sup> 4-terminal block.

<sup>f</sup> Includes Q340 (36 in.) thermocouple with adapters.

<sup>g</sup> Step pressure is not adjustable.